

## **CRANE LOAD CHARTS & RATED CAPACITY**

---

Theoretical Capacity versus Maximum Lifting Capacity

1 May 2025

### **Rating Palfinger Cranes**

#### **THEORETICAL CAPACITY**

Palfinger cranes are being labelled with a Theoretical Capacity which is greater than the crane's actual real-world capacity. Often manufacturers will calculate a lever moment force in tonne metres to class a model family of cranes and use this in marketing material. Palfinger has taken to adding this theoretical maximum on individual cranes' serial numbered load chart in the top right corner. This has been causing much confusion over where such cranes are ranked in the BC tonnage based crane competence classification system

#### **MAXIMUM LIFTING CAPACITY**

To find a crane's Maximum Lifting Capacity, refer to the crane's Load Chart itself, either in diagram form or table format. You will note the real world Maximum Lifting Capacity of the crane will have a corresponding Lift Radius. This is the value that will determine the crane's rating.

#### **EXCEPTIONS**

A crane must be fitted with a reinforced gusset band at the end of the non-extending section of the boom where a special hook can be attached to achieve the higher rated Theoretical Capacity for the crane. If this modification has been installed, the capacity with corresponding attachment point (radius) will be clearly indicated on the load chart.

#### **NOTE**

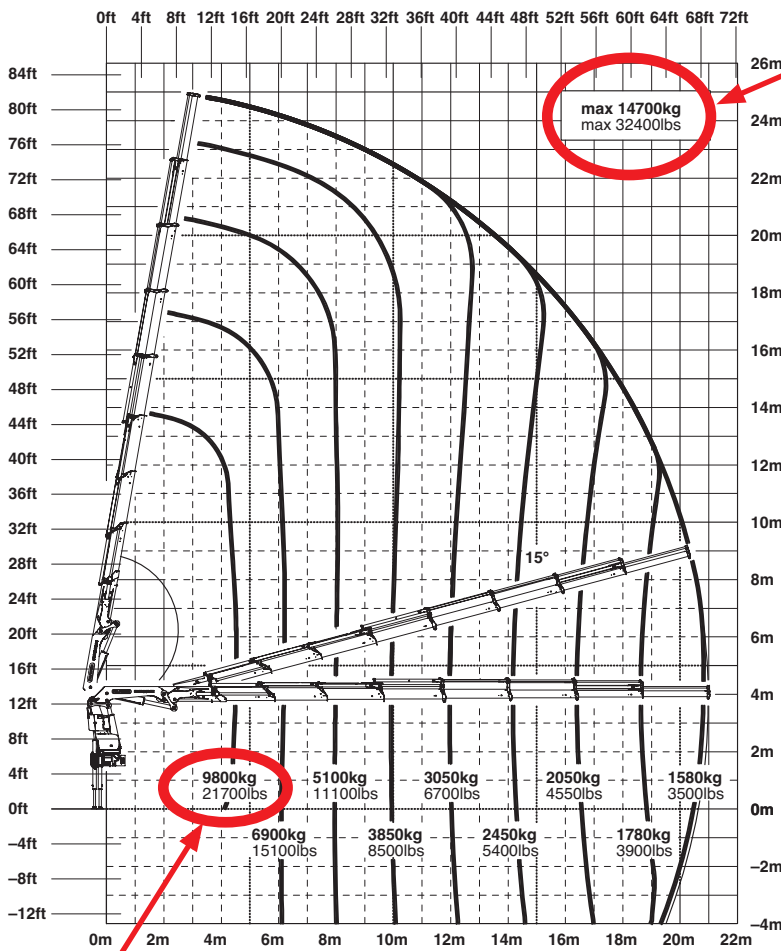
Palfinger have indicated that if the theoretical value on the chart is causing operator confusion they will reissue a serial numbered chart with the theoretical value removed.

Please refer to the following page for a visual description.

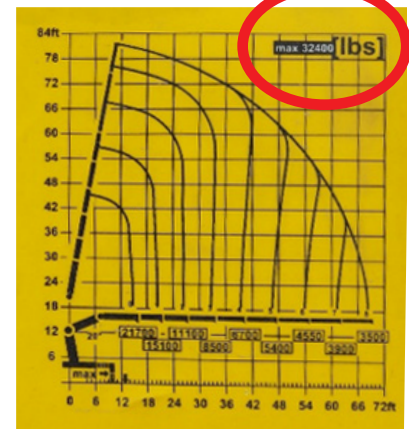
# LOAD CHARTS & RATED CAPACITY

## Theoretical Capacity versus Maximum Lifting Capacity

Example: Palfinger PK 53002 SH G



**Theoretical Capacity with no Radius**



**Load Chart Diagrams**

**Maximum Capacity with corresponding Radius**

**Theoretical Capacity with no Radius**

**Maximum Capacity with corresponding Radius**

**Load Chart Table**

max.		14700 kg	32400 lbs
4.5 m	14' 9"	9800 kg	21700 lbs
6.2 m	20' 4"	6900 kg	15100 lbs
8.0 m	26' 3"	5100 kg	11100 lbs
9.9 m	32' 6"	3850 kg	8500 lbs
12.0 m	39' 4"	3050 kg	6700 lbs
14.2 m	46' 7"	2450 kg	5400 lbs
16.4 m	53' 10"	2050 kg	4550 lbs
18.6 m	61' 0"	1780 kg	3900 lbs
20.8 m	68' 3"	1580 kg	3500 lbs
23.0 m*	75' 6"	900 kg	1980 lbs
25.0 m*	82' 0"	600 kg	1320 lbs

\*mechanical extension